
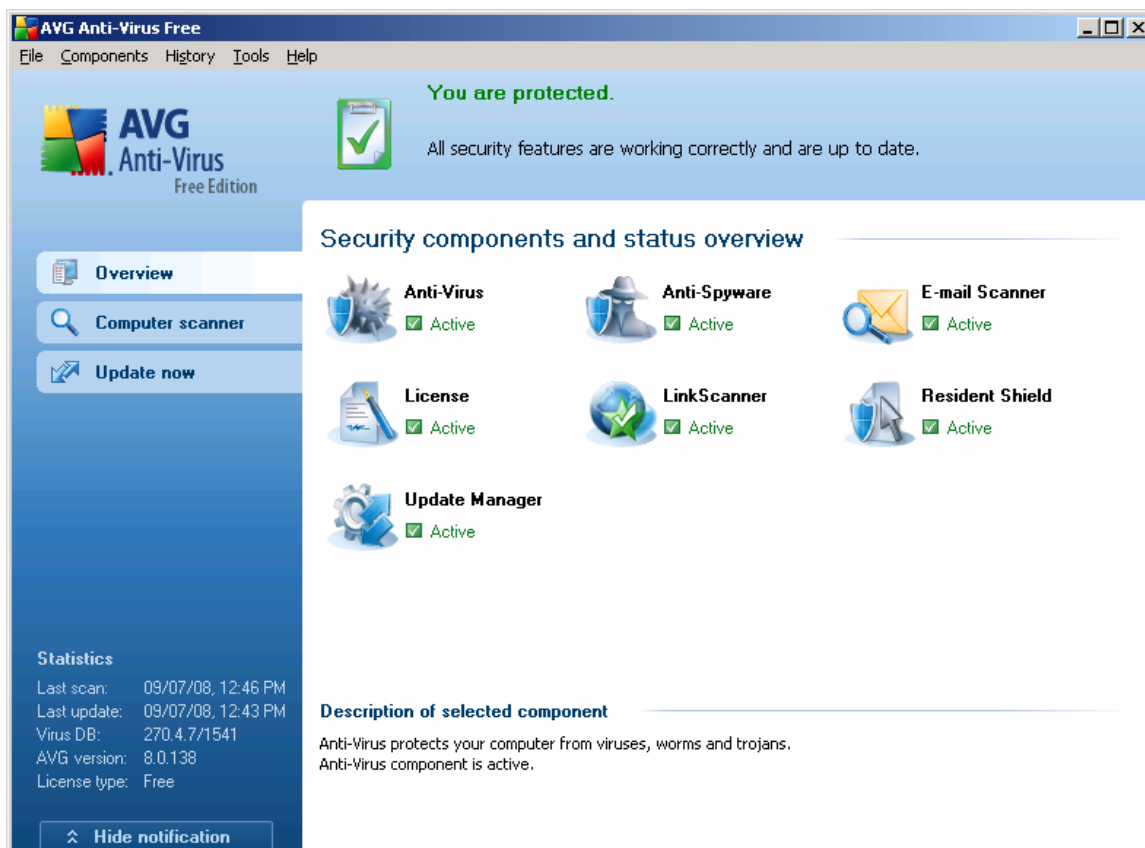


Using SilentMonitoring and AVG

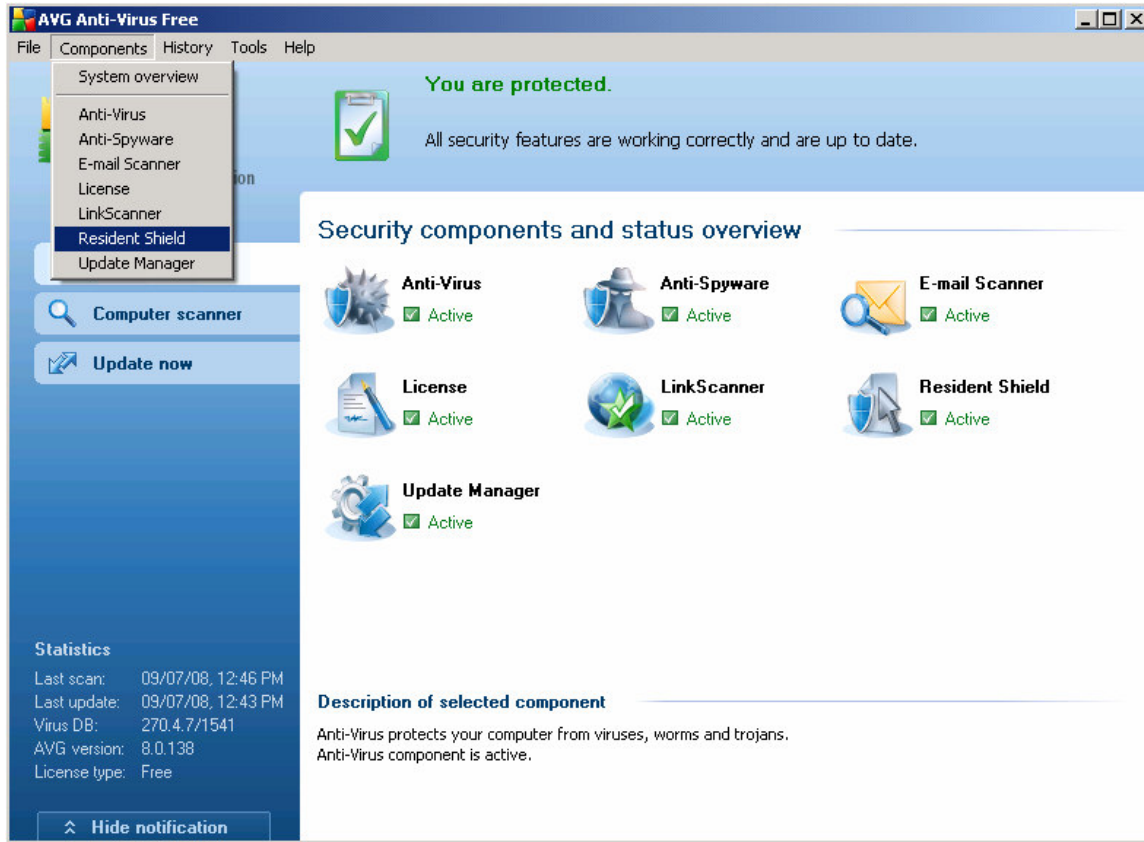
Step 1:

Open AVG, double click on the AVG con on the tray 



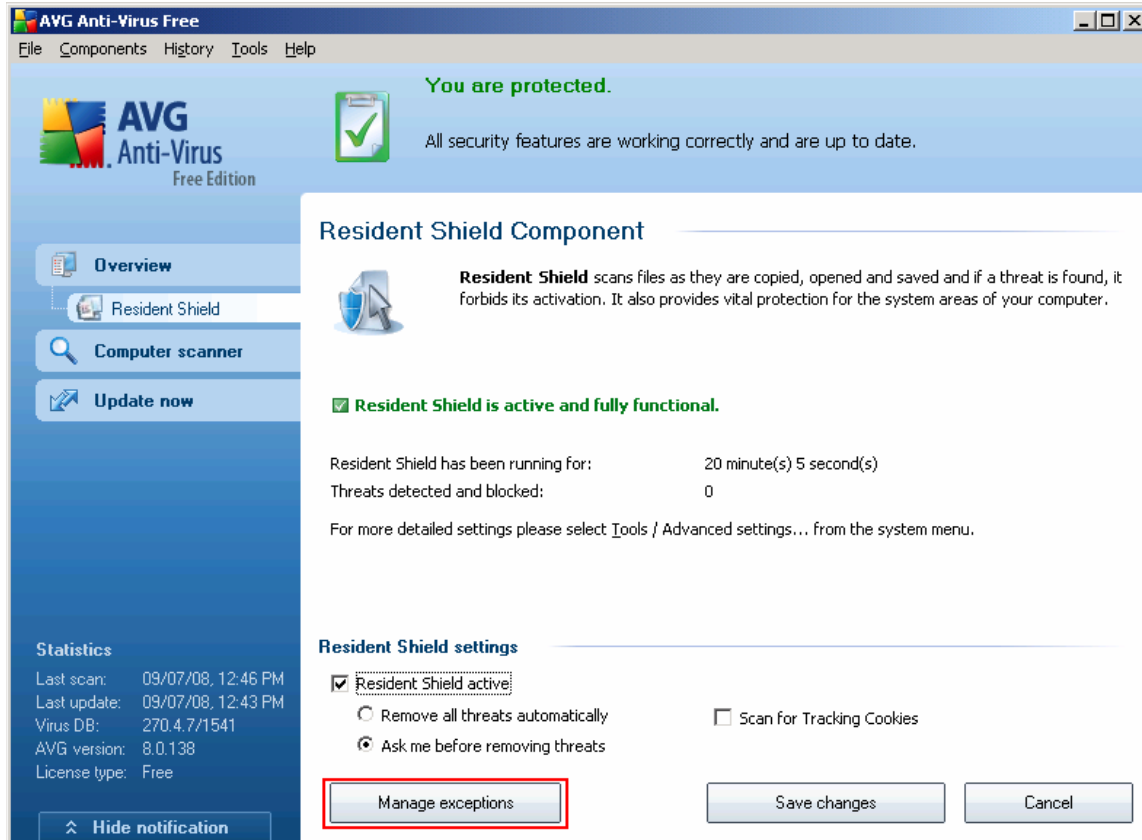
Step 2:

From the menu choose Components ---> Resident Shield



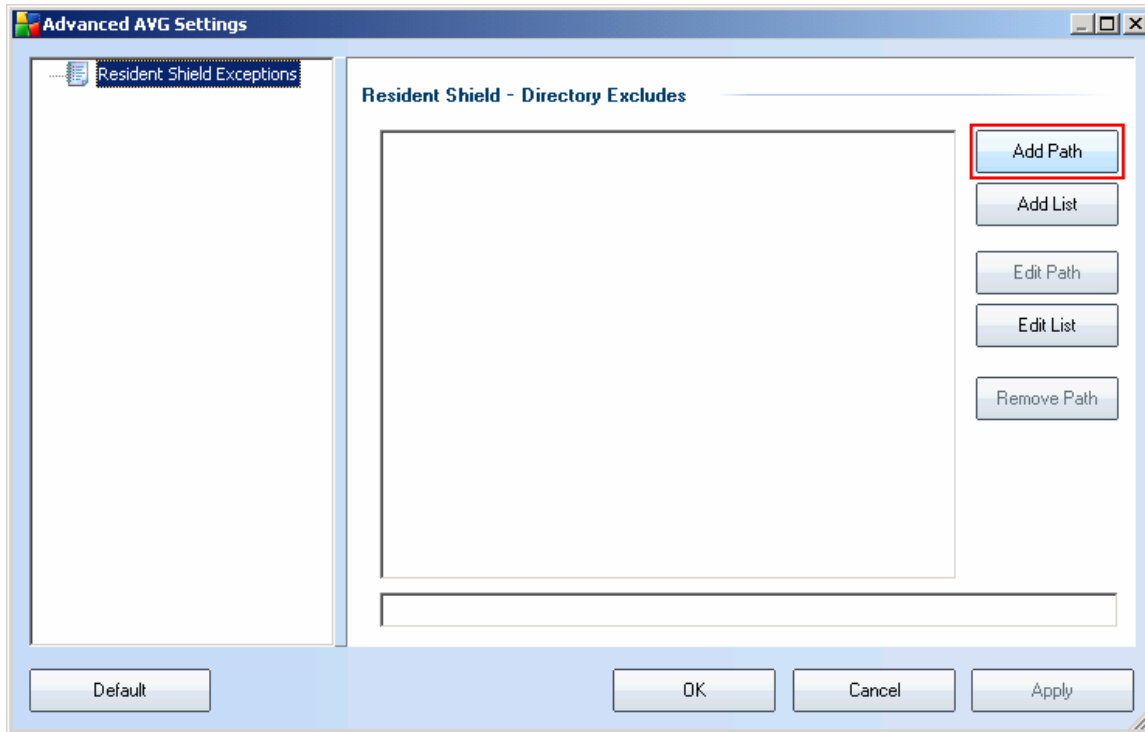
Step 3:

Now please press the button marked red on the lower center part of the window "Manage exceptions"

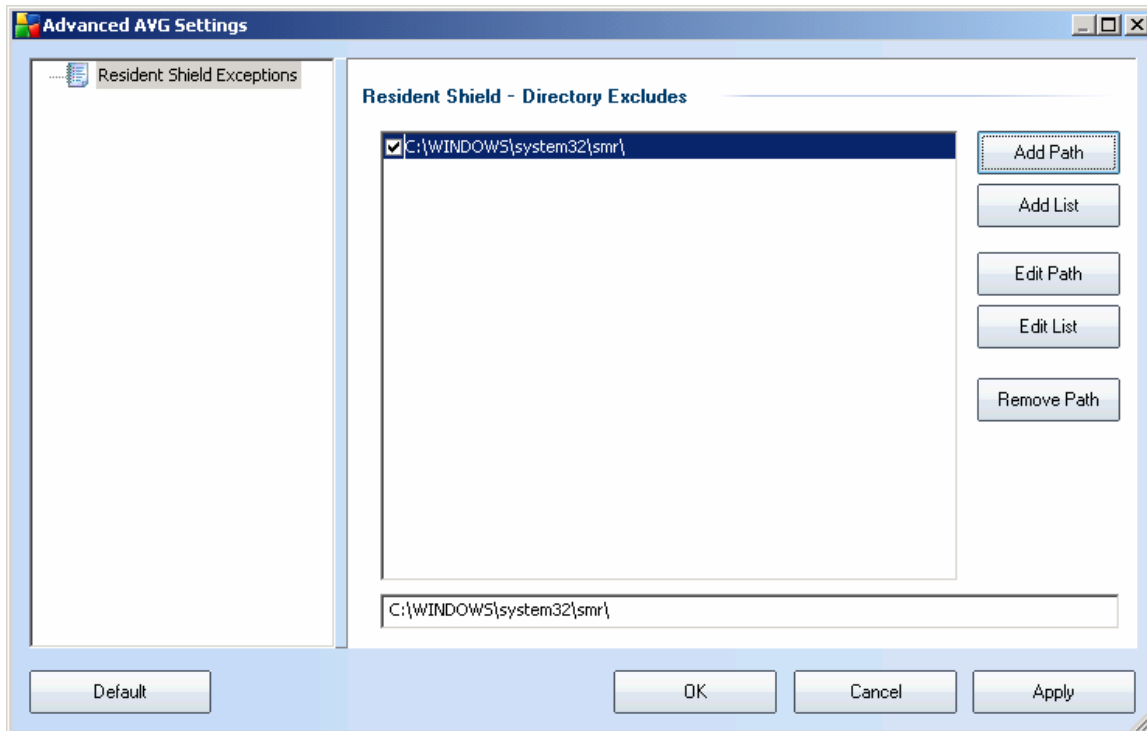


Step 4:

Click the "Add Path" button and add the SilentMonitoring directory as follows:



Add the following library



Press the OK button

Step 5:

Press the Save changes button marked red, to apply your new settings, restart your system.

