


## Using NOD32 and Silent Monitoring

File-level scanning of some email servers, backup software, gaming applications, etc. can occasionally cause abnormal system behavior. To exclude specific applications or folders from the ESET NOD32 Antivirus real-time scanner, see the step-by-step instructions below:

1. Open the main program window by clicking the icon  in the Windows notification area or by clicking **Start** → **All Programs** → **ESET** → **ESET Smart Security** or **ESET NOD32 Antivirus**.
2. Press the F5 key to display the Advanced Setup window.
3. From the Advanced Setup tree, click Antivirus and antispysware → Exclusions and then click the Add... button.

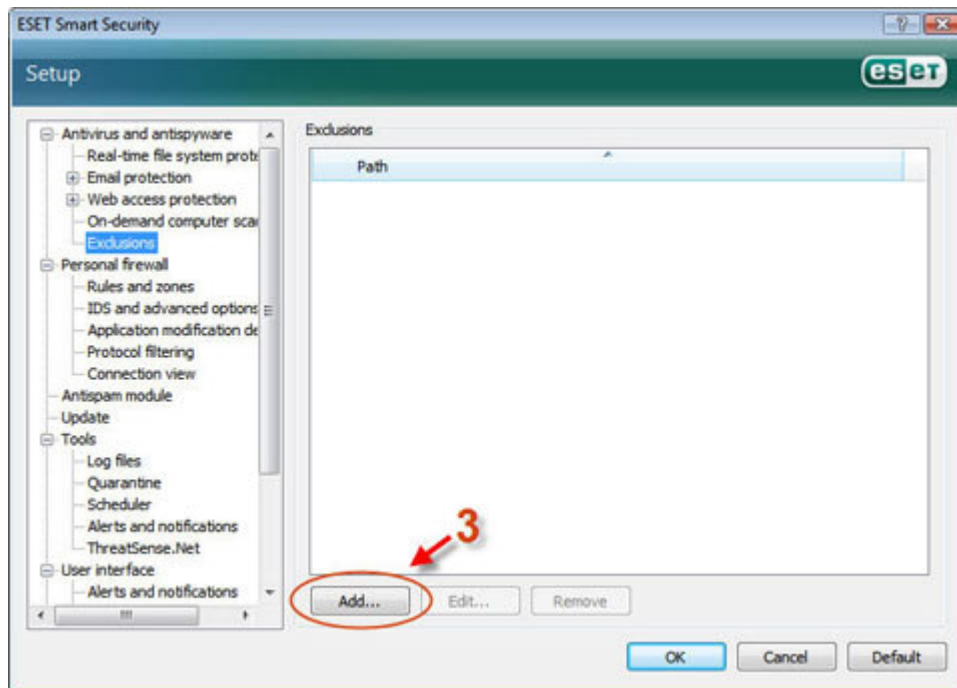


Fig. 1-1

4. The Add exclusion window will be displayed. Using the directory tree, browse for the folder or file you wish to exclude. The directory path will automatically display in the Exclusion: field. Click OK to save the exclusion.

NOTE: To exclude the contents of an entire drive, the \* symbol can be used as a wildcard. For example, to exclude scanning of the entire C:\ drive, you would enter C:\\* in the Exclusion: field.

To exclude all .doc files from scanning, you would enter C:\\*.doc in the Exclusion: field. For additional information on the use of wildcards to exclude file/folder scanning, press F1 from the Add exclusion window (Fig. 1-2).

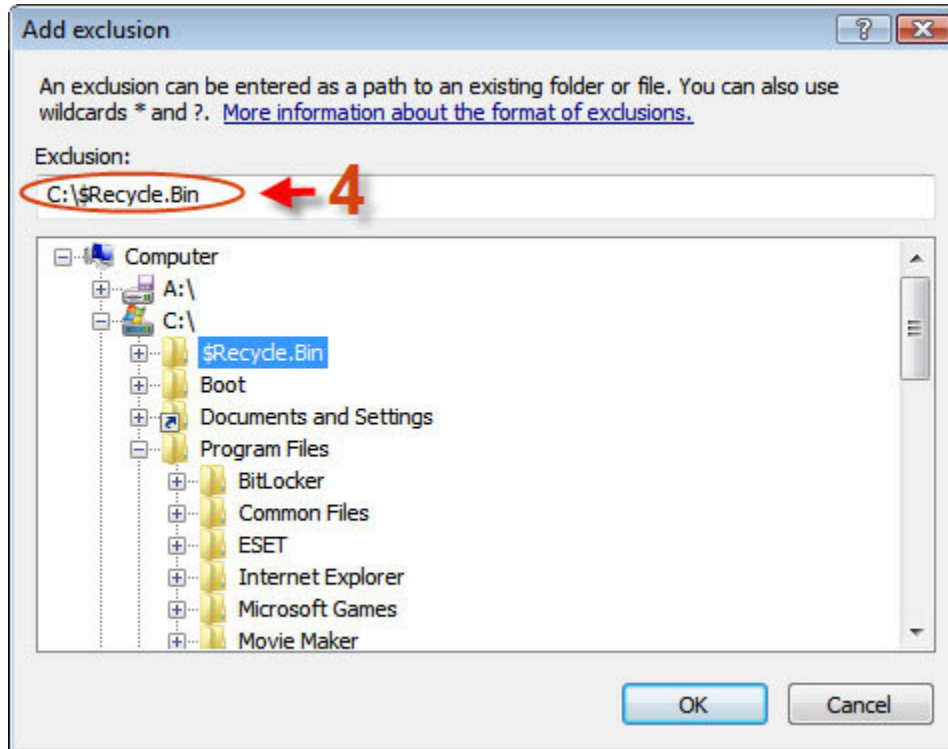


Fig. 1-2

5. Click OK again and close the main program window. Restart your computer.

**NOTE: If the application you are excluding communicates using a network protocol (HTTP, FTP, etc.) you must also follow the steps below:**

1. From the Advanced Setup tree, click Antivirus and antispayware → Web access protection → HTTP → Web browsers.
2. If the application you wish to exclude is listed, double-click the corresponding check box. A red "X" will appear. Click OK to save changes—you are finished. If you do not see the application you are trying to exclude, proceed to step 3.

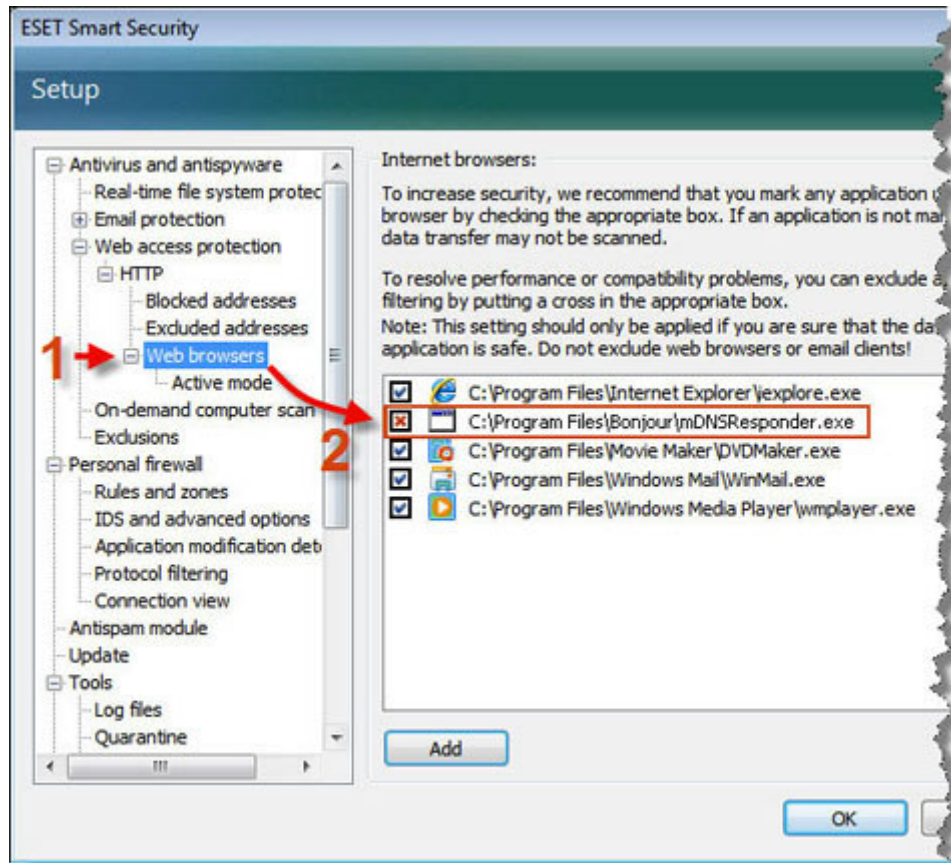


Fig. 1-3

3. Click the Add button to browse and select the .exe file of the desired application. The application will appear in the list of applications to exclude. Double-click the corresponding check box until you see a red "X". Click OK to save changes.